



When expect nothing, can expect unexpected!



## Contents

Brief introduction to ICF .....	3
How to become part of the ICF? .....	3
FAQ about ICF.....	4
What is the monthly membership fee?.....	4
How much "Time Voucher" do I get with my monthly membership fee?.....	4
Can I have more Sun in my network?.....	4
Data required to join the ICF .....	4
ICF platform websites .....	6
ICF Stake Functioning Scheme .....	6
ICF earnings schedule scheme.....	6
ICF Silent Partnership Agreement explanation.....	6



## Brief introduction to ICF

ICF is a bulk fundraising platform primarily for participation in the profits of the project. Bulk fundraising is carried out for larger projects. Certain smaller projects, project products or interesting products can be purchased directly on the ICF platform.

Acquired shares in ICF projects can be traded in the internal market for the role of the ICF. This is designed to allow ICF stake holders to sell ICF bets when their associated earnings per stake in an ICF project cease to be of interest or when they need money before the ownership time on an ICF project expires. The duration of ownership of a stake in an ICF project varies from project to project.

The rights and obligations of the initiator of the ICF project and the rights and obligations of the ICF customer's share in the project are defined by the Silent Partnership Agreement (SPA).

## How to become part of the ICF?

You can become a member of the ICF easily and quickly, through seven simple steps:

1. Enrollment is free.
2. If someone wanted to buy an ICF STAKE for any project or build an ICF network, they must pay membership fees. That is, as soon as he decides to send someone a referral link for enrollment must first be a member of the ICF.
3. The online process of checking KYC membership must be passed.
4. The membership fee is paid monthly, month after month, from the date of enrollment for a registered ICF member.
5. 50% of the membership fee is distributed to the network at up to 7 levels of depth<sup>1</sup>.
6. 50% of the membership fee is allocated to the maintenance and development of the ICF system.
7. With the payment of the membership fee, time vouchers<sup>2</sup> are obtained for playing online games, lasting 300 minutes, which will be available in the ICF system.

---

<sup>1</sup> **Depth levels** - ICF is structured with 7 depth levels named after the order of the planets of the solar system. Sun, Mercury, Venus, Earth, Mars, Jupiter, and Saturn.

<sup>2</sup> **Time vouchers** – Time vouchers will be available when the games are placed on the ICF platform. Until the game is placed on the ICF platform "Time Vouchers", from the paid membership fee, will be cumulated in the user's account on the ICF platform. If a member wants to spend more time in the online games of the ICF platform, they can buy a separate "Time Voucher" on the ICF web store.

## FAQ about ICF

### What is the monthly membership fee?

Monthly membership fee at ICF is 20 EUR.

### How much “Time Voucher” do I get with my monthly membership fee?

With a monthly membership fee, you get one "Time Voucher" lasting 300 minutes.

You can buy additional "Time Voucher", if you need them, in the ICF web store.

### Can I have more Sun in my network?

This is often a question that we have encountered in the various networks of which we have been a part. In the ICF network, we have enabled each member, with the basic one position of the Sun, to become the Sun and build their network of planets by purchasing a "Voucher Positions Sun" on the ICF web store. According to his decision and plans, a member of the ICF can buy with the basic Sun position at any time additional Sun positions.

The price for the additional position of the Sun, "Voucher Positions Sun", is 700 €.

### Data required to join the ICF

To join the ICF network, you need an invitation. An invitation can be sent to you by someone who is a member of the ICF network. You also get an invitation to the ICF network, with a unique referral identifier (URI), when you buy "Voucher Positions Sun". You can send the URI you get by purchasing "Voucher Positions Sun" to others to tap into your network that you are starting to build. You can also send URI to people who are already members of the ICF network and people who are not yet members of the ICF network.

Once you decide to become part of the ICF network, you need the following information:

- For natural persons:
  - Name.
  - Surname.
  - Address where the natural person lives:
    - The name of the street,
    - House number,
    - Zip code,
    - The name of the city,
    - State.

- Official identification document:
  - Type of identification document (Identity card or passport),
  - ID of the identification document.
  - Image of the front of the identification document.
  - Picture of the back of the identification document.
- Email.
- Cell phone number.
- Nick name.
- For legal entities:
  - The name of the legal entity,
  - Address of the legal entity:
    - The name of the street,
    - House number,
    - Zip code,
    - The name of the city,
    - State.
  - Natural person who is a representative:
    - Name.
    - Surname.
    - Address where the natural person lives:
      - The name of the street,
      - House number,
      - Zip code,
      - The name of the city,
      - State.
    - Official identification document:
      - Type of identification document (Identity card or passport),
      - ID of the identification document.
      - Image of the front of the identification document.
      - Picture of the back of the identification document.
    - Email.

- Cell phone number.
- Nick name.

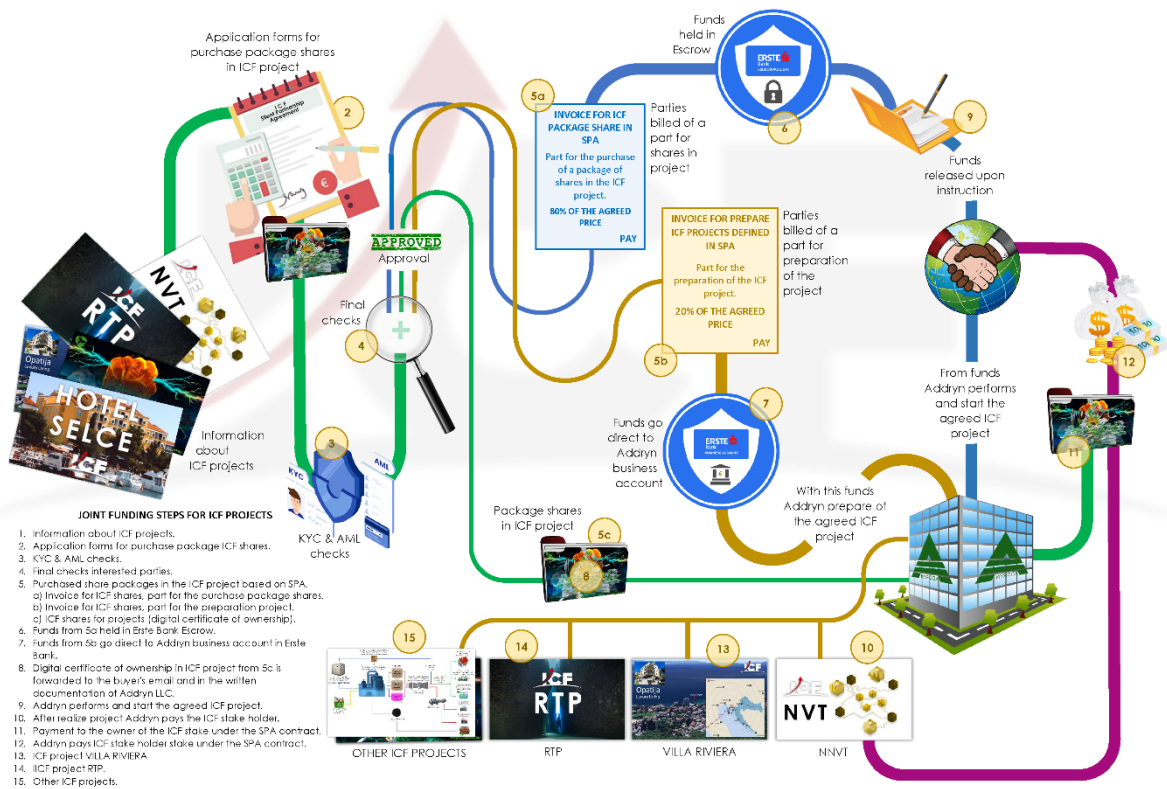
## ICF platform websites

The ICF platform was designed by Addryn LLC. Basic information about the ICF platform exists on the home web pages of [Addryn LLC](http://Addryn LLC).

Broader descriptions of ICF projects, actions carried out by ICS, forums, etc. it is located at the site <https://ecosprkglobal.com>.

Direct access to the ICF platform is through the pages on the <https://icfcommunity.com>. In this place you can enroll, do KYC, look at your earnings and your network structure that you have built and buy various ICF products on the ICF web store.

## ICF Stake Functioning Scheme



## ICF earnings schedule scheme

In the final modeling...

## ICF Silent Partnership Agreement explanation

In the final modeling...

